



ExitCare Convert V6.7/8 to V7.X Guide

April 2008

Table of Contents

GETTING STARTED	3
<i>Introduction</i>	3
<i>Pre-requisites</i>	3
SETUP	3
<i>Assumptions</i>	3
<i>ExitCare Convert Process</i>	3
<i>Launching ExitCare application</i>	10
<i>Other Resources</i>	10

GETTING STARTED

Introduction

ExitCare has been designed to work with all versions of MS SQL 2005, including the free MS SQL Server Express. The free Express edition of MS-SQL Server is best suited for smaller installations. If your installation supports many concurrent users, we recommend the full version of MS-SQL 2005 for optimal performance. This guide is only intended for upgrading from version 6.7/ 6.8 to version 7.0.

Note: For ExitCare HL7 Receiver:

The ExitCare® HL7 server may be placed on the same server as the SQL Server or on a separate system.

Note: For ExitCare Communication Server:

The ExitCare® Communication server may be placed on the same server as the SQL Server or on a separate system.

Pre-requisites

1. Microsoft System requirements <http://www.microsoft.com/sql/prodinfo/sysreqs/default.aspx>
2. Microsoft SQL Server Express (free) <http://msdn2.microsoft.com/en-us/express/bb410791.aspx>
Or SQL Server <http://www.microsoft.com/sql/default.aspx>
3. How to Install Microsoft SQL Server <http://msdn2.microsoft.com/en-us/library/ms143516.aspx>


SETUP

The conversion needs to be run from the 6.x server (or accept slower performance, if you run from a workstation where ExitCare 6. x was installed)

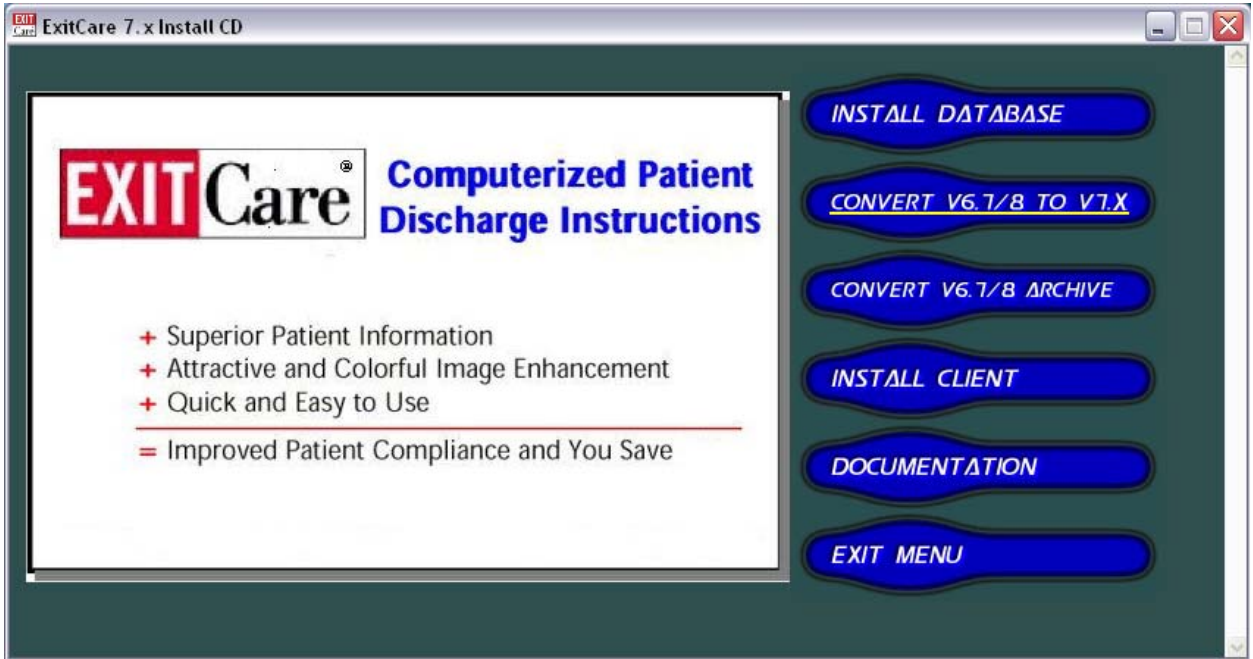
Assumptions

1. SQL Server has been installed and is ready for use. The ExitCare converter will automatically convert the ExitCare database files to an existing database of your choice, including proper settings, per Database Installer information below.
2. Database Installer: The ExitCare Install Database utility has been run which created and configured the ExitCare SQL database required for successful completion of conversion. Refer to the ExitCare_v7.x_Install Database Utility Guide.doc file for installation instructions.

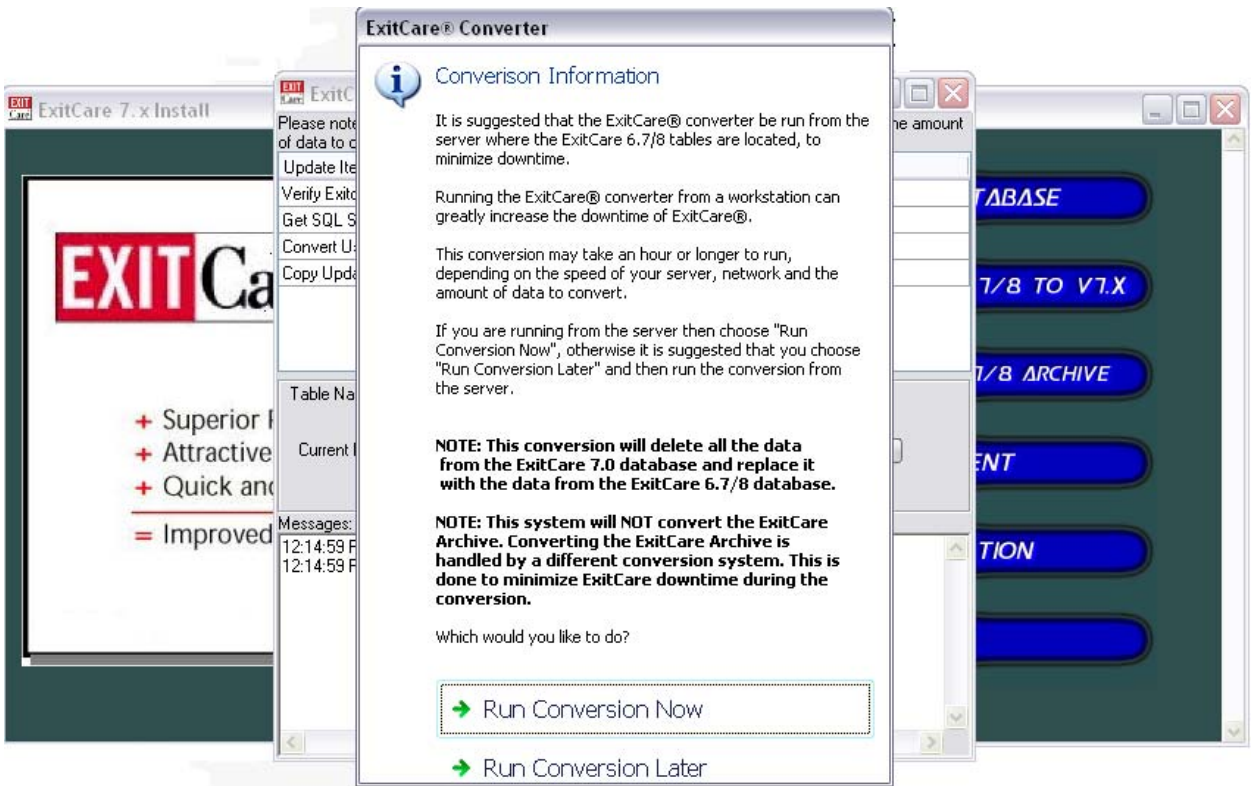
ExitCare Convert Process

1. Insert ExitCare v7.X CD into your ROM Drive to begin the installation process.
2. If the menu does not automatically appear, double click  menu.exe , located on the root of the CD.

3. Click **Convert v6.7/8 TO V7.X**



4. After you have read the Conversion Information, click **Run Conversion Now**



5. **Select the Database Server:** from the drop down list select or type in the name of the SQL Database Server you wish to install ExitCare into. (below)

Note: server names in this tutorial do not reflect your environment and are for illustration purposes only.

EXIT Care SQL Connection Form

Database Connection Information
ExitCare 7 now uses Microsoft SQL Server for the data engine.
Please enter the connection information below.
If you do not know the connection information or you do not have a SQL server, please select "Cancel" and then get the connection information and install SQL Server if needed.

SQL Server

1) Select the Database Server *Select the Server Name in your environment for converting 6.7/8 files to version 7.x*

SQL Server Name: TESTSERVER

2) Select the Authentication Type

Use Windows Integrated Authentication

Use SQL Server Authentication

User Name:

Password:

3) Database Name

Database Name:

4) Workstation Setting

Add a setting to the ExitCare 6.x database so ExitCare 7 will automatically use this connection information

Test Connection OK Cancel

6. **Select the Authentication Type:** (below), enter information and click Test Connection

ExitCare 7 now uses Microsoft SQL Server for the data engine.
Please enter the connection information below.

If you do not know the connection information or you do not have a SQL server, please select "Cancel" and then get the connection information and install SQL Server if needed.

SQL Server

1) Select the Database Server

SQL Server Name: TESTSERVER

2) Select the Authentication Type

Select the appropriate Authentication type for your network environment. For this illustration SQL Authentication is used.

Use Windows Integrated Authentication

Use SQL Server Authentication

User Name: SA

Password: *****

3) Database Name

Database Name:

4) Workstation Setting

Add a setting to the ExitCare 6.x database so ExitCare 7 will automatically use this connection information

Test Connection OK Cancel

7. **Database Name:** select or type in the name of a pre-existing database – the converting process requires an existing SQL database for a successful version upgrade. This SQL database is created and setup up previously using the Install Database function from the Menu. ExitCare will not create a database during the conversion to SQL.

EXIT Care SQL Connection Form

Database Connection Information

ExitCare 7 now uses Microsoft SQL Server for the data engine.
Please enter the connection information below.

If you do not know the connection information or you do not have a SQL server, please select "Cancel" and then get the connection information and install SQL Server if needed.

SQL Server

1) Select the Database Server

SQL Server Name: TESTSERVER

2) Select the Authentication Type

Use Windows Integrated Authentication

Use SQL Server Authentication

User Name: SA

Password: *****

3) Database Name **Select the database to write converted files to - database must exist.**

Database Name: Database1

4) Workstation Setting

Add a setting to the ExitCare 6.x database so ExitCare 7 will automatically use this connection information

Test Connection OK Cancel

8. **Workstation Setting:** selecting this option (default) writes information entered in items 1-3 to the DBISAM 6.x database. After workstations have been updated to 7.x this setting contains the required information for SQL server. The application will not ask the user for connection information. If this option is left un-checked you will be prompted for connection information before launching ExitCare for each workstation.

EXIT
Care

SQL Connection Form

Database Connection Information

ExitCare 7 now uses Microsoft SQL Server for the data engine.
Please enter the connection information below.

If you do not know the connection information or you do not have a SQL server, please select "Cancel" and then get the connection information and install SQL Server if needed.

SQL Server

1) Select the Database Server

SQL Server Name: TESTSERVER

2) Select the Authentication Type

Use Windows Integrated Authentication

Use SQL Server Authentication

User Name: SA

Password: *****

3) Database Name

Database Name: Database1

4) Workstation Setting

Add a setting to the ExitCare 6.x database so ExitCare 7 will automatically use this connection information

Testing your connection is recommended

Test Connection OK Cancel

Test SQL Connection

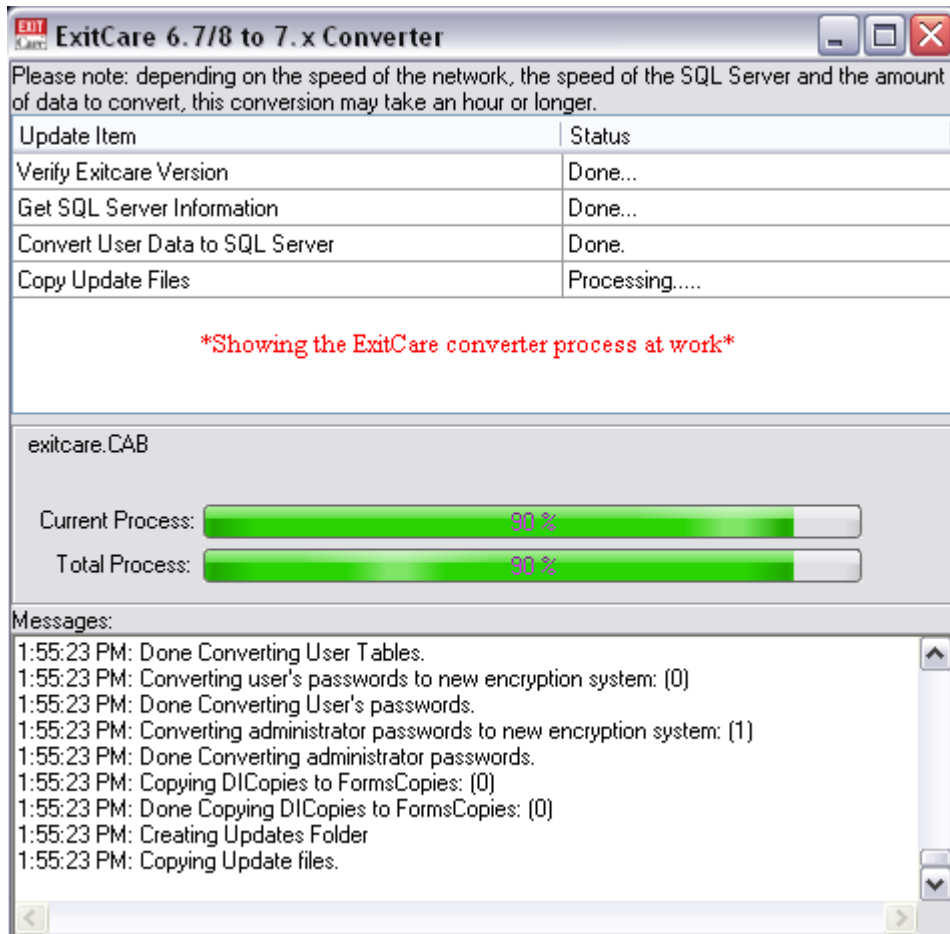
Connection test was successful.

OK

9. Click OK. At this point the conversion begins and ExitCare files are prepared for the SQL Server environment.

10. The converter process window (below) appears showing ExitCare updating.

Note: Network performance issues (speed, latency, environment, etc.) are not within the scope of this document nor within the control or knowledge of ExitCare, LLC.



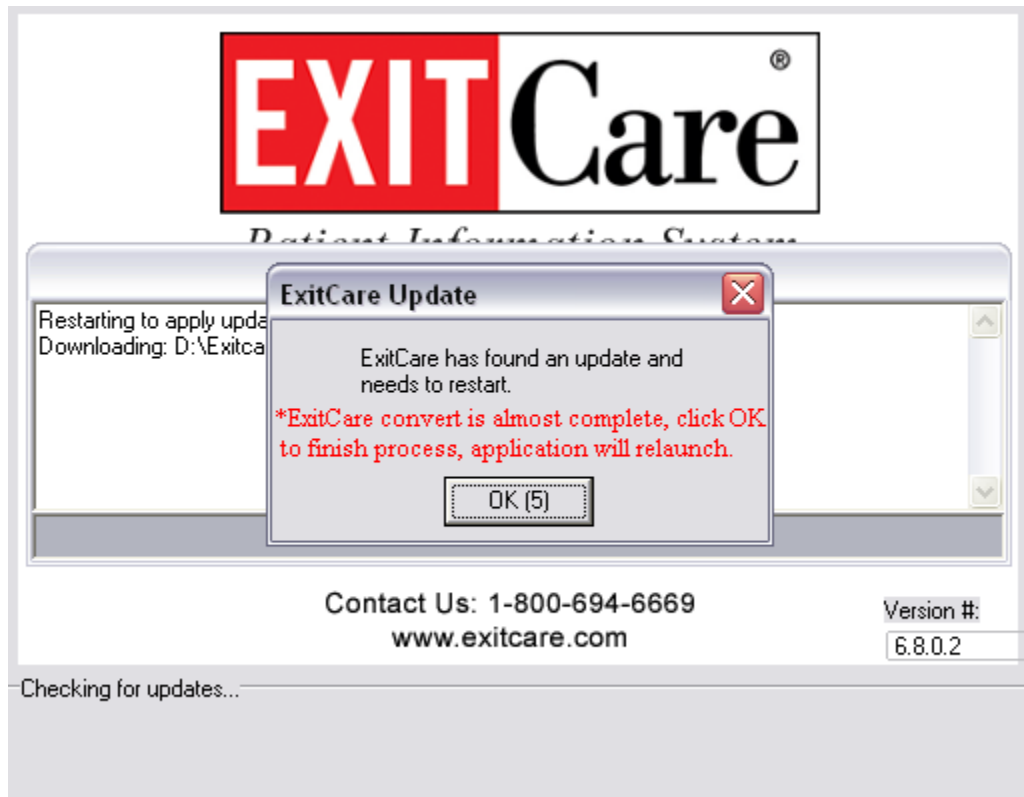
11. Click OK to accept the updated application.



Launching ExitCare application

Note: ExitCare will require database connection information before launching version 7.x. If the Workstation Settings check box was selected (default) on the SQL Connection Form screen, then the settings will have automatically updated for version 7.x.

Verify the update was successful by launching ExitCare.exe or double clicking the ExitCare icon (from Start > Programs). Launching ExitCare triggers updated information to sync and thereby forces the application to restart. Once ExitCare 7.x successfully starts on a Workstation, repeat this process for each Workstation running ExitCare; that is, simply restart ExitCare and allow it time to update from 6.x to 7.x.



Final confirmation of updated version

Confirm the version update to version 7.x by viewing the lower right hand side of the status bar on the main screen.

Other Resources

Installing Microsoft SQL Server <http://msdn2.microsoft.com/en-us/library/ms143516.aspx>

Microsoft additional SQL Server 2005 Tools and Utilities <http://technet.microsoft.com/en-us/sqlserver/bb671104.aspx>

<http://www.microsoft.com/sql/prodinfo/sysreqs/default.msp>