



Patient Information System

## ExitCare® In-Patient Product Fact Sheet

### Description

One of the founding principals behind the ExitCare Patient Information System was the creation of documents that would actually improve patient compliance. If the patient does not read a document, it can not have a positive impact on their care. Since its introduction in 2000, the ExitCare software has evolved to become the easiest to use and fastest growing patient education software in the industry, now used in over 650 medical facilities.

### Patient Education Content

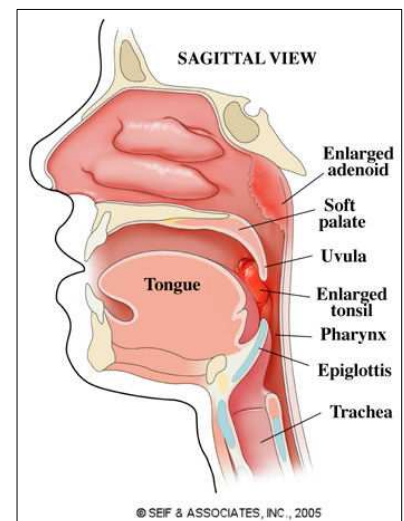
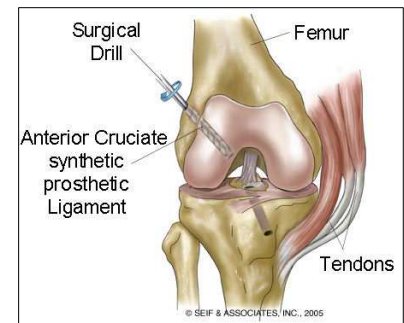
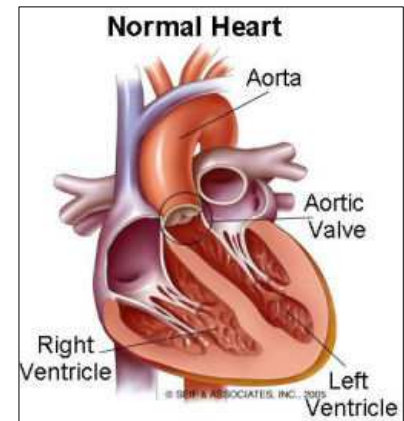
- Authored by physicians
- Documents included from experts such as National Headache Foundation, the United Ostomy Association, the American Diabetes Association, the Anemia Society, and other similar organizations
- Updated quarterly (both documents and drug information sheets)
- Reading level from 6<sup>th</sup> to 8<sup>th</sup> grade based on Flesch-Kincaid
- 2,000+ English topics (1,000 additional ED topics available)
- Over 280 Sports Medicine topics with detailed rehab exercises
- ExitLabs™ provides patient friendly explanations to 300+ lab tests.
- The most common topics have been translated into **Spanish, Russian, Vietnamese, and Portuguese**. Other languages available.
- Font size can be increased to 24 point for visually impaired patients
- Document format is designed to encourage readership with bullets, organized layout and color
- Text is augmented with color illustrations where appropriate
- Patient specific parameters such as temperature thresholds to seek further care, or amount of weight bearing allowed are easily set

### Software features

- Very intuitive interface – easy to learn
- Macro system allows users to establish sets of documents, work excuses, prescriptions, drug info sheets, etc. for repetitive discharges
- Easily customized: document shortcuts, categories, drug lists, notes, and scripts can be set up by User, Department or Facility
- Edit existing documents, saving changes as templates if desired
- Easily add custom documents
- Permanent Patient Archive of all printed documents
- Recent Patients List allows you to build profile over several days
- Integrated Patient Comprehension Questions

### Medication Management with ExitMeds™

- First DataBank (FDB) drug database with over 21,000 drug names.
- Over 2,850 drug-specific informational handouts in English & Spanish
- Over 1,000 drug defaults to easily prescribe any of the top 200 meds
- Electronic prescription writing
- Drug interaction checking
- Medication Reconciliation
- Patient Medication Schedules



For further information please call ExitCare at (800) 694-6669 or visit [www.ExitCare.com](http://www.ExitCare.com)